

# Fluo-200 Mini Fluorometer

The brand-new Fluo-200 Mini Fluorometer is specifically designed for laboratories, and it is committed to providing efficient and accurate detection support for the highly sensitive quantification of DNA, RNA, and proteins. Through innovative improvements in intelligent software and hardware, the Fluo-200 Mini breaks free from the limitation of having a built-in screen on the instrument, significantly enhancing experimental efficiency and data reliability. It is suitable for various application scenarios such as NGS quality control, reagent development, and clinical diagnosis.

ALLSHENG



## » Smart and Handy

It supports control via mobile phones/tablets (with the Android APP), enabling real-time data viewing, and realizing the collaboration between the fixed terminal in the laboratory and the mobile terminal.

It can also supply power to the instrument through mobile phones/tablets, covering complex operation scenarios.

Connection Method:

[Bluetooth wireless connection](#) / [OTG connection](#)

## » Instantaneous Response

It can complete the quantification of samples within 2 seconds. Coupled with a one-click operation process, it realizes a seamless connection from "sample in" to "result out".

## » Micro-Quantity Detection

Only 1-20  $\mu\text{L}$  of the sample is required to complete the high-precision detection, reducing the consumption of precious reagents.



0571-88859758



[www.allsheng.com](http://www.allsheng.com)

## » Kinetic Detection

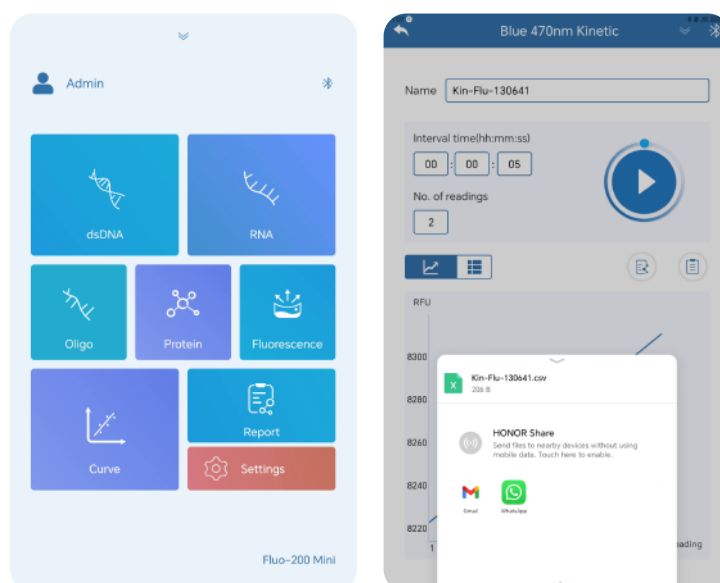
It can monitor the changes of fluorescence signals in real time during kinetic detection, generate a time-fluorescence intensity curve, and support trend analysis.

## » Data Sharing

Generate PDF and CSV reports with just one click and send them directly via email.

## » Automatic Detection

It can intelligently recognize the status of the lid to enable continuous sample detection.



## Technical Parameter

Light Source	LED
Excitation Wavelength	Blue: 470±15nm
	Red: 625±20nm
Emission Wavelength	Green: 525 - 570nm (45nm)
	Red: 670 - 725nm (55nm)
Detector	Photodiode (320 - 1100nm)
Linearity	$R^2 \geq 0.995$
Linear Range	5 logs

Sensitivity(Detection Limit)	<0.1pg/μL(dsDNA HS)
Detection Time	≤2 seconds per sample
Input Power	5V 2A
Power Adapter	100-240V@50-60Hz
External Interfaces	USB(Type A)×1; USB(Type C)×1
Connection Methods	Bluetooth connection, USB wired connection
(W×D×H)	83×83×92mm
Instrument Weight	0.5kg

## Ordering Information

Code	Product Description
AS-18070-00	Fluo-200 Mini Fluorometer

Code	Product Description
AS-18070-01	Tablet PC (Optional)

### HANGZHOU ALLSHENG INSTRUMENTS CO., LTD.

Building 9 No.7 of Zhuantang Science and Technology Economic Zone,  
Xihu District, Hangzhou City, 310024 Zhejiang, P.R. China

Tel: +86-571-88859758

Fax: +86-571-87205673

✉ info@allsheng.com

🌐 www.allsheng.com

